



Let **UK** Home

1 Bedrooms

Flat

Located  
in Manchester

£310,000



[pmadmin@letukhome.co.uk](mailto:pmadmin@letukhome.co.uk)

<https://www.letukhome.co.uk/>

01615219812



# 51 Great Jackson Street Manchester

M15 4NP



Let UK Home are excited to offer a stunning one-bedroom apartment in Contour Tower nestled in the heart of Manchester's vibrant city centre.

The flat comprises a spacious open kitchen with a stylishly attached dining area, a magnificent living room, one bright bedroom and one modern bathroom.

Boasting an exclusive 12,000-square-foot luxury private clubhouse, residents will enjoy concierge service, fully-equipped panoramic gyms and spinning studios, a private cinema, and a professional virtual golf simulator. Additional premium facilities include a Faldo wine lounge, Chinese mahjong room and co-working business meeting rooms. Complemented by a pet SPA, terrace lounge, private gardens, a 1.5-acre central green landscape, children's play area and dedicated pet park, the development perfectly caters to fitness, socialising, work and leisure needs.

The property benefits from exceptional transportation connectivity. Within walking distance are Deansgate-Castlefield Train Station and Oxford Road Metro Station, providing seamless access to Manchester's major business and shopping districts. Piccadilly Central Station and Arndale City Centre are just a short journey away, with quick rail links to Manchester International Airport for effortless domestic and international travel. Well-connected to key road network.

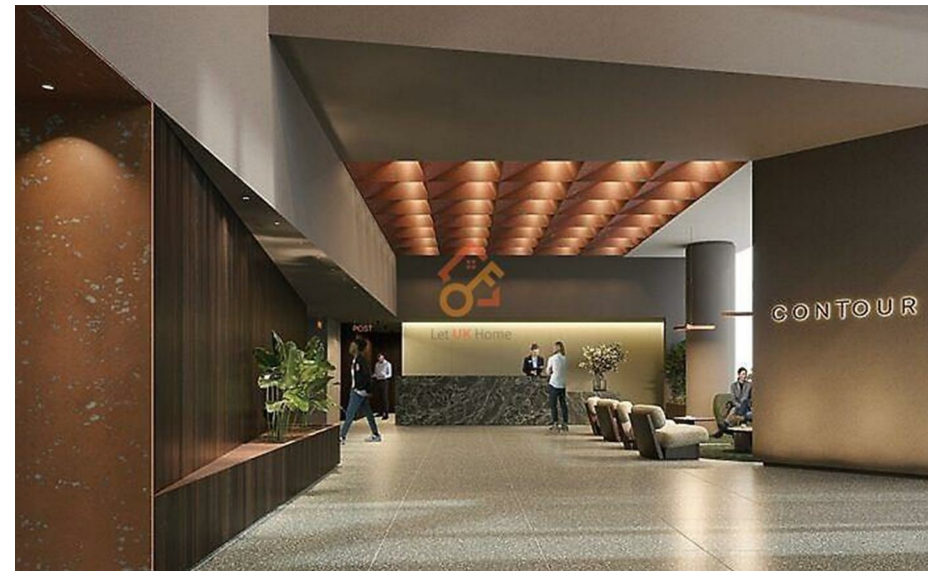
It is steps away from a wealth of premium shopping and leisure destinations, including the iconic Arndale Shopping Centre, the upscale Spinningfields financial district with luxury boutiques, and the creative First Street precinct featuring

# 51 Great Jackson Street Manchester

£310,000 Leasehold



- 47th Floor
- Gym
- Virtual Golf
- Terrace
- Wine Lounge
- Concierge
- Cinema
- Meeting Room
- Spinning Studio
- Chinese Mahjong Room



## SOUTH TOWER VIEW



TYPE	METRIC	IMPERIAL
LIVING / KITCHEN	8.39 x 2.96	27'6" x 9'8"
BEDROOM 1	4.69 x 2.75	15'5" x 9'0"
TOTAL AREA	53.9 sq m	580.5 sq ft



Let **UK** Home

1/F, St James Tower 7 Charlotte  
Street  
Manchester  
M1 4DZ

01615219812

[pmadmin@letukhome.co.uk](mailto:pmadmin@letukhome.co.uk)

### Council Tax Band:

### Local Authority:

Agents Note: Whilst every care has been taken to prepare these particulars, they are for guidance purposes only. All measurements are approximate and are for general guidance purposes only and whilst every care has been taken to ensure their accuracy, they should not be relied upon and potential buyers/tenants are advised to recheck the measurements.

Energy Efficiency Rating		Current	Potential
Very energy efficient - lower running costs			
(92 plus) <b>A</b>			
(81-91) <b>B</b>			
(69-80) <b>C</b>			
(55-68) <b>D</b>			
(39-54) <b>E</b>			
(21-38) <b>F</b>			
(1-20) <b>G</b>			
Not energy efficient - higher running costs			
<b>England &amp; Wales</b>	EU Directive 2002/91/EC		

<https://www.letukhome.co.uk/>